

Garbage Compactor Truck Manual



Whatsapp: +86 159 7192 0800
+86 159 7192 0800

Introduction

Garbage Compactor truck mainly used for garbage collection, compression & transportation. Which consist of sealed compactor body, tailgate hopper, push plate, hydraulic transmission system and electrical control system.

Rear hopper collects the garbage, broke and compressed into the compactor body, which means the garbage compactor truck has more loading capacity than others. Not only can efficiently avoid second pollution during collection, but also reduce personnel cost. What's more, we company produced rear loading garbage compactor trucks all use computer control system, which has high automation lever.

This Owner's Manual mainly introduction the garbage compactor truck structure, working principle, operation, maintenance and troubleshooting. Chassis maintenance refers to manual.

My Company has been committed to help customer achieve more profit by purchasing our products, be proficiency of the truck operation and maintenance. We sincerely suggest that you kindly refer to this manual and be skilled operator before any operation.

This Owner's Manual should be carefully kept together with truck. Continuous improvement made our compactor truck better, so this manual may not totally same with your truck. Which means your garbage compactor truck operation guidance, maintenance, adjustment should follow the rear situation.

目录

1.	Working Process	1
2.	Operation Principle	2
3.	Maintenance	7
4.	Notice	9
5.	Troubleshooting	11
6.	Accessories	13

Whatsapp: +86 136 4729 9000
+86 159 7192 0800

1. Working Process

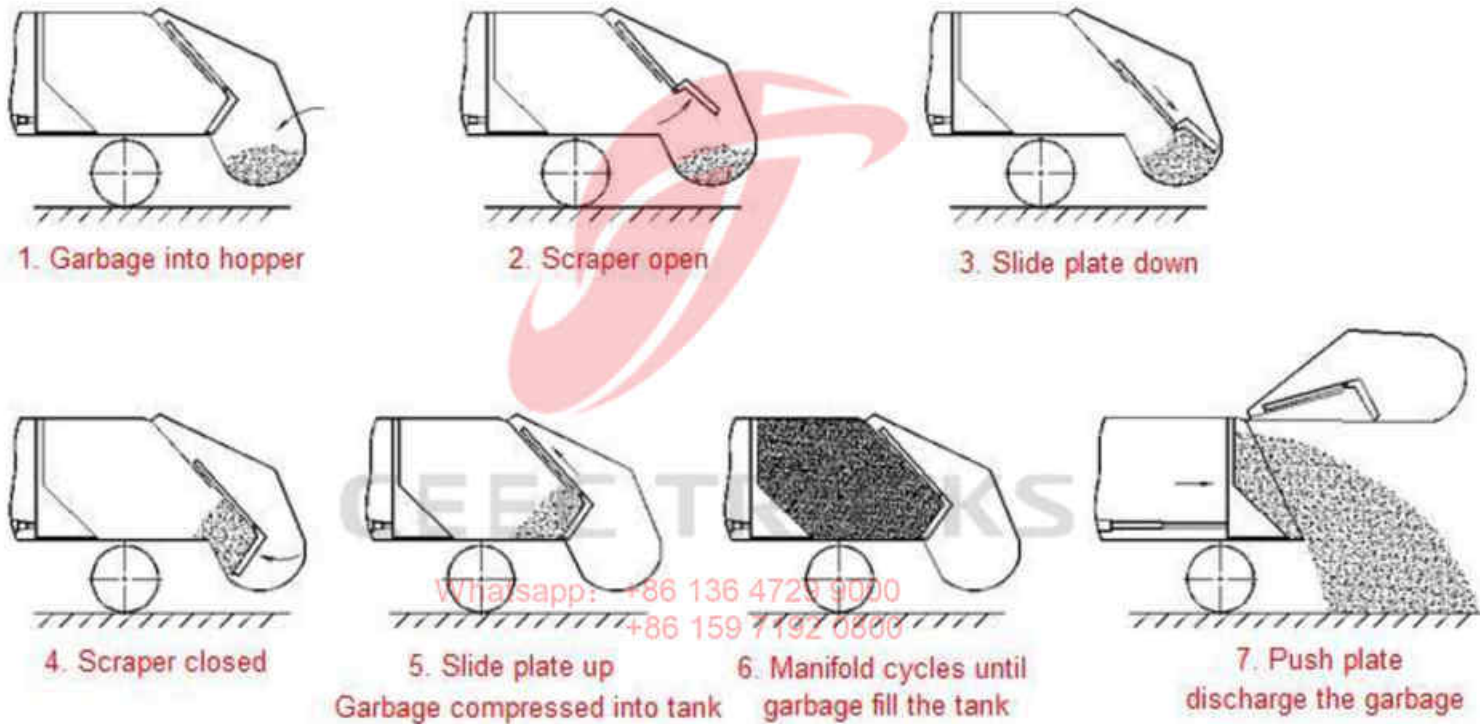


Figure 1、Working Process Diagram



2. Working Principle

1、 Working Preparing

- ①Transmission gearbox on position “N”, then start truck engine。
- ②Engine working approx. 2 minutes until Pressure Indicator point over 6.5*100Kpa, press the clutch pedal & hang on PTO, then slowly loosen the clutch pedal (**Please press the clutch pedal and hang on PTO again if heard any noise**), connect the power, and oil pump can start working.

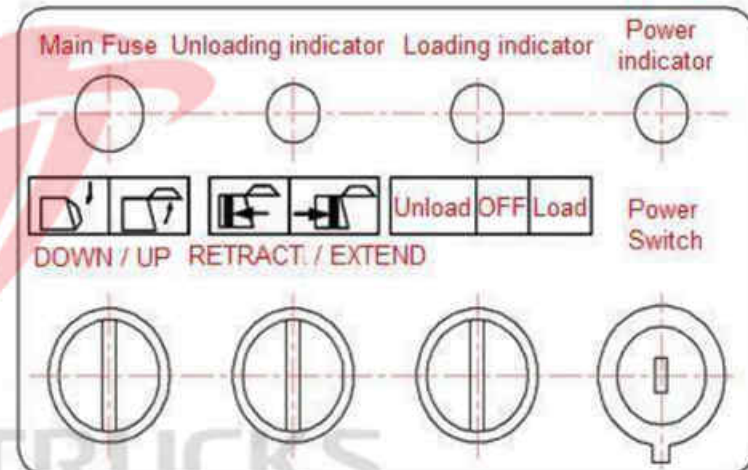


Figure 2、 Cabin Main Control Box

Whatsapp: +86 136 4729 1600
+86 159 7192 0800

Please note this time the multi-way valve at middle position, and hydraulic system at unloading condition.



③ Turn on the Main Control Box power switch, the power indicator light on and ready for working.

Notice: The Main Control Box power switch should be OFF position when garbage compactor truck not working

2、 Loading Working

Main Control Box LOAD / UNLOAD Switch turn to UNLOAD, the unloading indicator light on

① Single Cycle

Operate Rear Control Box at two sides of hopper (Figure 3), Press Single Cycle Button, and then garbage compactor truck into single cycle working mode

② Continuous Cycle

Operate Rear Control Box at two sides of hopper (Figure 3), Press Continuous Cycle Button, and then garbage compactor truck into continuous cycle working mode

Whatsapp: +86 136 4729 9000

+86 159 7192 0800

③ Continuous Cycle Stop

Operate Rear Control Box at two sides of hopper (Figure 3), Press Continuous Cycle Stop Button, and then garbage compactor truck continuous cycle working stopped

④ Emergency Stop



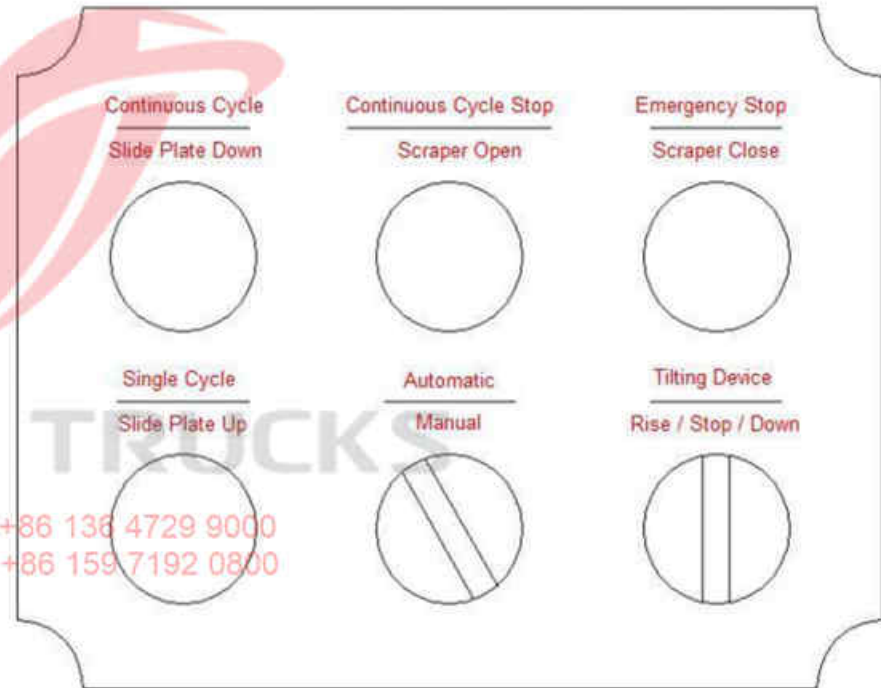
When emergency situation, operate Rear Control Box at two sides of hopper (Figure 3), Press Emergency Stop Button, and then garbage compactor truck all working stopped.

The Main Control Box power switch should be OFF position when garbage compactor truck not working

Notice: ① when single cycle working mode, if want to stop any working step, just need press Single Cycle Button again, the can start next step

② when Slid Plate Up but cannot reach to extreme position, means the tank is full of garbage, and should stop loading working to avoid overload and damage the vehicle

③ when Scraper & Slid Plate working, the electronic control system will automatically control the engine power output, no need any control of the engine accelerator



Whatsapp: +86 136 4729 9000
+86 159 7192 0800

Figure 3、Rear Control Box

Operation Instruction:

1. Turn to Automatic, “Continuous Cycle”, “Continuous Cycle Stop”, “Emergency Stop”, “Single Cycle” buttons start working
2. Turn to Manual, “Slide Plate Down”, “Scraper Open”, “Scraper Close”, “Slide Plate Up” buttons start working
3. “Tilting Device” button, turn to Rise, the tilting device up working; turn to Down, the tilting device down working
4. Press “Single Cycle” button, scraper & slide plate working as following: “scraper open→slide plate down→scraper close→slide plate up”, and this working mode only once
5. Press “Continuous Cycle” button, scraper & slide plate working as following: “scraper open→slide plate down→scraper close→slide plate up”, and this working mode continuously
6. Press “Continuous Cycle Stop” button, scraper & slide plate working as following one time: “scraper open→slide plate down→scraper close→slide plate up”, and then stopped



7. Press "Emergency Stop" button, scraper & slide plate will stop all working immediately

3、Rear Tilting Device with optional Model

1) 、 In Cabin, Turn Main Control Box UNLOAD / LOAD Switch (Figure 2) into LOAD, the Loading indicator light on

2) 、 Rear Tailgate, Operate Rear Control Box TILTING DEVICE Switch (Figure 3), and the tilting device can working up, down & stop, then can finish garbage loading working.

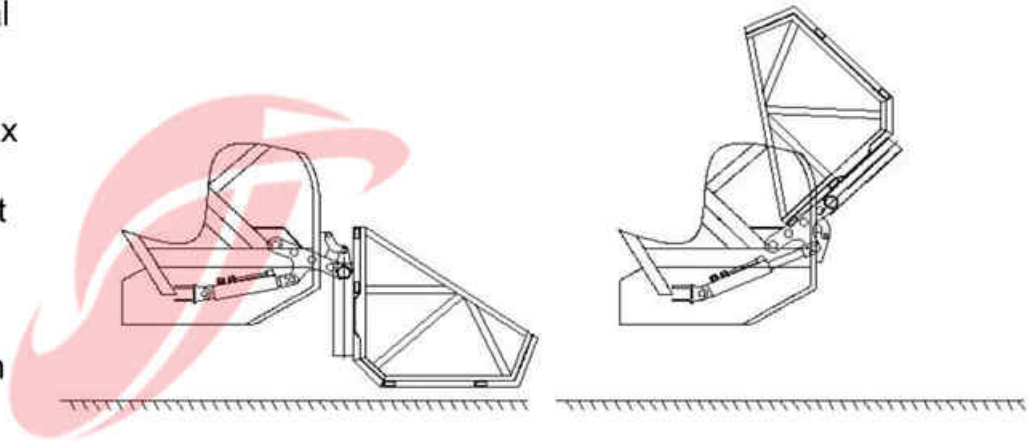


Figure4、 Tilting device for garbage collection

4、 Garbage Discharge Working

Whatsapp: +86 136 4729 9000
+86 159 7192 0800

Operate the PTO by above steps, and then turn on the POWER SWITCH (Figure 2)

① In Cabin, Turn Main Control Box UNLOAD / LOAD Switch (Figure 2) into UNLOAD, the Unloading indicator light on



- ② Turn "Tailgate DOWN / UP" Switch (Figure 2) into UP, and keep in this position, then rear tailgate start lifting, when tailgate lifting at extreme position, release the switch and tailgate stop lifting.
- ③ Turn "Push Plate RETRACT / EXTEND" Switch (Figure 2) into EXTEND, and keep in this position, then push plate start discharging garbage, when all garbage discharged; Turn "Push Plate RETRACT / EXTEND" Switch (Figure 2) into RETRACT, and keep in this position, then push plate start moving back, and release the switch when push plate re-tract at least 50cm.
- ④ Turn "Tailgate DOWN / UP" Switch (Figure 2) into DOWN, and keep in this position, then rear tailgate start going down, when tailgate down at extreme position and being locked, release the switch and tailgate stop going down



Figure4、Multiway Control Valve

5、Hydraulic Joystick Operation

- ① When Electric System broke down, it is easy to operate Multiway Control Valve (Figure 5), then can finish Loading & Unloading job
- ② When manual Hydraulic Joystick Operation, please make sure the engine speed 1200r/min
- ③ When manual Hydraulic Joystick operate the Tailgate, make sure the joystick at extreme position



④When manual Hydraulic Joystick Operation stopped, release the cable accelerator to make sure engine speed at 800r/min

3. Maintenance

Chassis & engine maintenance please refer to attached Chassis Manual

1. Carefully checking hydraulic oil tank oil level every day. Testing method: Hydraulic Cylinder for push plate, scraper, slide plate, tilting device & tailgate all at Retract position, watch the hydraulic oil tank level indicator. Please add more when lack of oil.
2. At normal temperature situation, the hydraulic system need 46# Anti-wear Hydraulic Oil; In the cold weather area (below 0°C), the hydraulic system need 32# Anti-wear Hydraulic Oil. Please note different model & brand hydraulic oil cannot be mixed use. When adding hydraulic oil to the tank, it is better to use 10 μ m filter, which can efficiently guarantee the hydraulic oil clean.
3. After 3 months normal use, the mew truck should replace hydraulic oil and filter. Later on, the hydraulic oil and filter should be changed once half a year. Changing method: Hydraulic Cylinder for push plate, scraper, slide plate, tilting device & tailgate all at Retract position, release the hydraulic oil from tank, take off & clean the coarse filter, also clean the oil drain plug and oil tank. after clean and change working, add enough clean hydraulic oil to standard level, exhaust pipeline air (Start truck engine and make sure the engine idle running, connect the PTO, then oil pump operation slowly). When hydraulic oil replace job finished, operate the hydraulic system until it can work smoothly. Carefully checking all parts and make sure no any loose or fall off, and no any leakage, if have any problem, please solve it immediately.



4. High-pressure hose pipeline need to change every two years, if have any cracking, aging, damage or inflation bulge, please change immediately
5. Regular inspection Hydraulic System to make sure no leakage. In time maintain and change new seal is necessary
6. Scraper and push plate lead rail, all rotation axles point should add lubricating grease (Figure 6), and the lubricating grease should be calcium base grease, which can be added directly by grease gun.
7. When hydraulic cylinder working normally, it is not need removing the cylinder to do maintenance work; however, if any leakage or inner leaking, the cylinder must be removed and replace new seal ring.
8. Regular checking hydraulic system working pressure (Designed working pressure 16Mpa) Press joystick to extreme position and check the piezometer number, then can know if the pressure normal or not. If pressure not same as the designed pressure, please adjust the hydraulic system overflow valve, which on



multiway valve, until it is same with the designed 16Mpa pressure.

- 1) : Loosen Overflow Valve Nut
- 2) : Rotate Overflow Valve Screw, clockwise rotation the pressure increase, counterclockwise rotation the pressure decrease.
- 3) : After pressure set as designed, fasten the Overflow Valve Nut

(Note: The adjust process should be slowly, avoid instantaneous extreme high pressure to damage the oil pump)

9. Regular examination for Pressure Switch and make sure the set pressure be 14Mpa. When system pressure is different with set pressure, please adjust the Pressure Switch, Adjust method (Figure 8)

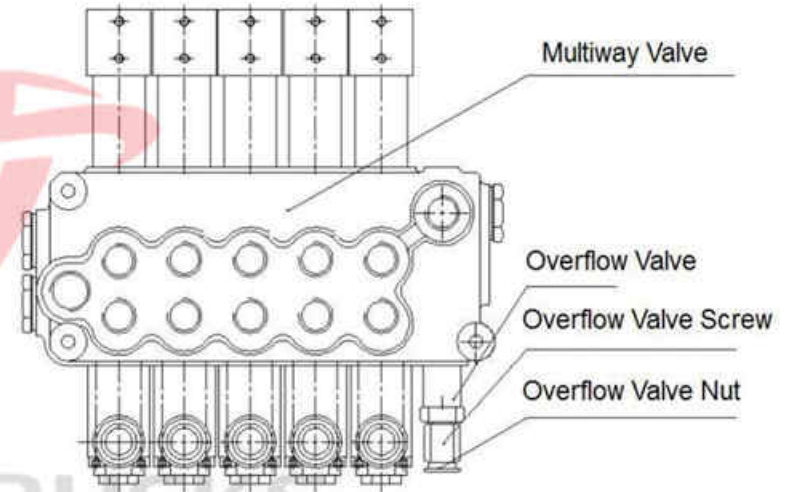


Figure7、Hydraulic Pressure Adjust

- 1) : Clockwise rotations adjust the switch, pressure increase;
- 2) : Counterclockwise rotations adjust the switch, pressure decrease.

10. Please note the Warning Note and Operation Instruction efficiently avoid any wrong operation and maintenance cause truck broken & people hurt.

4. Notice

- 1、 The PTO should be disconnected when truck moving, to guarantee accelerator working at the truck running condition
- 2、 Before the garbage compactor truck driving, make sure the Main Control Box Power Switch at "OFF" position, which can efficiently protect Electrical System from damage during driving
- 3、 Hydraulic direction valve & Pressure switch pressure has been set, please not do any change. Carefully refer to "Troubleshooting Method" when have any problem. The one should be responsible for damage of the parts if did any adjust
- 4、 If hydraulic oil filter blocked, please cleaning or change new one in time
- 5、 Make sure the hydraulic oil tank Shut-Off Valve open when hydraulic system working. Only when hydraulic oil pipeline replacement that you need close the Shut-Off Valve, which can prevent any leakage during maintenance

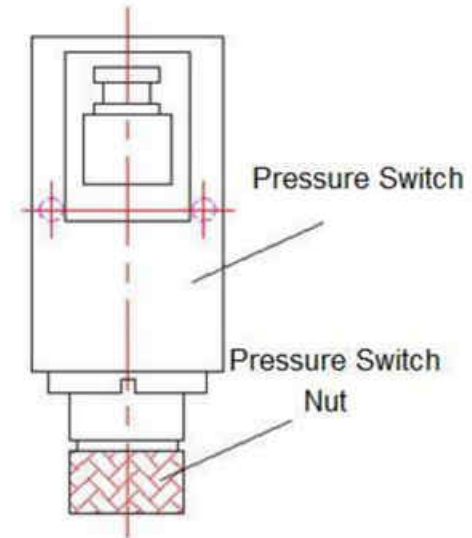


Figure8、 Pressure Switch Adjust

- 6、 When Rear Tailgate lifting for some maintenance, keep safety is very necessary, and need to be support firstly then can do maintenance
- 7、 If the Slide Plate for some maintenance, make sure the Slide Plate at lowest position, to avoid any wound
- 8、 When working in Rear Tailgate or Compactor Tank, make sure PTO disconnected, engine power off and oil pump not working, to avoid any wound
- 9、 New truck should strictly following the Truck Chassis Manual
- 10、 Chassis maintenance should strictly following the Maintenance Manual
- 11、 Strictly avoid directly injection to Electrical components and Oil tank air inlet valve when washing truck
- 12、 Keep hydraulic system clean when removing working
- 13、 When garbage compactor truck nylon slide wear clearance over 8mm after long time use, please replace new one

Whatsapp: +86 136 4729 9000
+86 159 7192 0800

5. Troubleshooting



Method Trouble	Trouble Location		Reason	Method	Remark
	Engine condition	Examination			
Not working	Stop	Hydraulic oil tank	No hydraulic oil	Deal the leakage point, add hydraulic oil to 4/5 full position	Take off the oil pump and check the PTO internal spline broken or not; check oil pump external spline broken or not
		Oil pump inlet pipeline	Hydraulic oil leakage because of inlet pipeline fall off or damage	Change or install new inlet pipeline	
		Oil pump	Shaft broken or shell damage	Change new Oil pump	
	Idle condition	PTO	No air	Check if have air	
			Fork stuck and cannot hang PTO	Forced hang PTO, if heard any gear noise means cannot hang POT; if no gear noise means fork stuck, and need to change new PTO	
Lower pressure	Stop	Oil pump	Oil pump overflow valve adjust point loosen	Detach the Regulating valve, cleaning & reinstall the valve, then adjust	
			Oil pump severe wear because of impurities of the hydraulic oil	Change new Oil pump	
			Oil pump spline shaft severe wear		

		PTO	Internal spline severe wear	Change new PTO	
Scraper, slide plate, tailgate and push plate moving slowly or shaking	Idle condition	Hydraulic oil not enough or have foam	Oil cylinder working lack of hydraulic oil, hydraulic oil with foam	Wait approx. 2 hours and add enough hydraulic oil	Way 1: use $\varnothing 1$ mm steel push the valve core Way 2: take off clean then reinstall
		Hydraulic oil cylinder has air	Oil cylinder working lack of hydraulic oil, hydraulic oil with foam	Add enough hydraulic oil then back & forth working several times to eliminate air	
		Huge temperature change	Hydraulic oil with high viscosity	Cold weather, idling running at least 10 minutes	
Hang the PTO, Scraper, slide plate, tailgate or push plate only have single stroke	Stope	Integrated electropneumatic valve	Related valve core offset or stuck	Take off damage part and change new one	As for Manual pneumatic multi-way valve, please do not test self-leakage
		Manual pneumatic multi-way valve	Hydraulic oil impurity, main valve core offset	Take off clean then reinstall	
Mechanical manual normal; Electrical manual or automatic working abnormal	Idle condition	Integrated electropneumatic valve	Related valve core stuck	Take off clean then reinstall	As for Manual pneumatic multi-way valve, please do not test self-leakage
			Related valve O-type ring damaged, and leakage	Take off O-type ring and change new one	
Tilting device no tilting power or	Stop	Manual pneumatic	Retaining spring damage, main valve core offset	Change new retaining spring	

powerless		multi-way valve	Heavy throttling, cause huge power lose	Adjust the Throttle valve	
-----------	--	-----------------	---	---------------------------	--

6. Accessories

- 1、 Truck Chassis Manual
- 2、 Chassis Quality Certificate
- 3、 Garbage Compactor Truck Operation Manual



CEEC TRUCKS

Whatsapp: +86 136 4729 9000
+86 159 7192 0800

